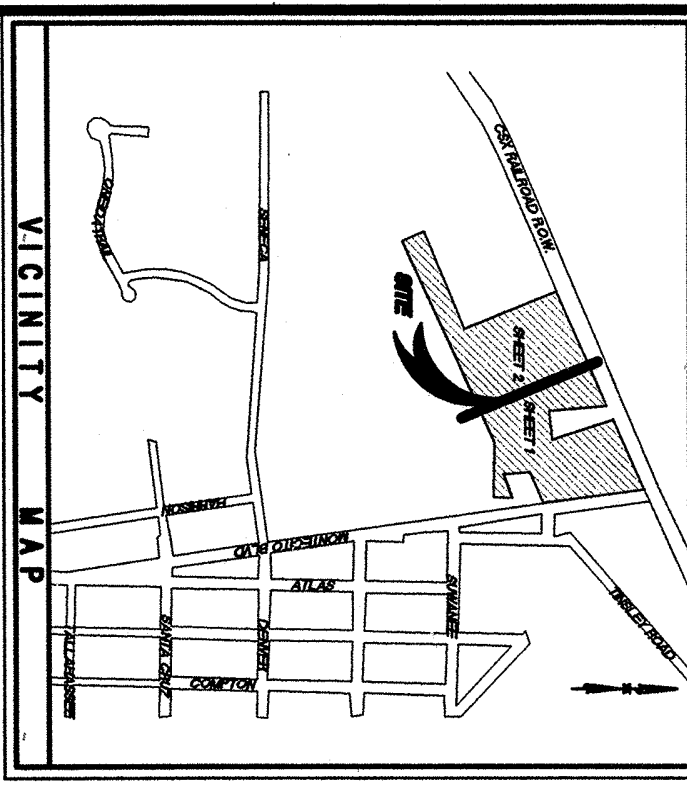


AVALON ESTATES

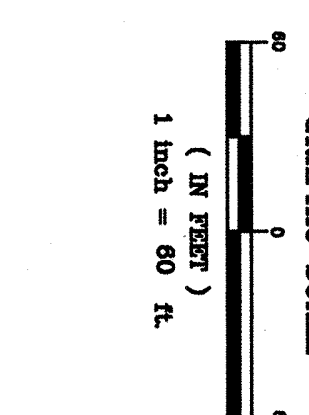
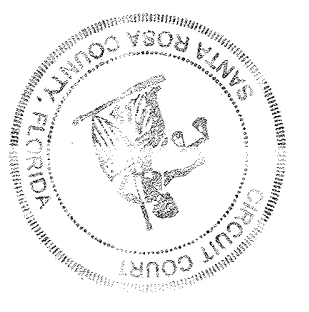
A SUBDIVISION OF A PORTION OF SECTION 35, TOWNSHIP 1 NORTH, RANGE 29 WEST
SANTA ROSA COUNTY, FLORIDA
AUGUST, 2009



CERTIFICATION OF APPROVAL, CLERK OF THE CIRCUIT COURT

I, MARY M. JOHNSON, CLERK OF THE COURTS OF SANTA ROSA COUNTY, FLORIDA, HEREBY CERTIFY THAT THIS PLAT COMPLES WITH ALL THE REQUIREMENTS OF THE PLAT ACT, CHAPTER 177, SECTIONS 177.011-177.191 OF THE FLORIDA STATUTES, AND THE SAME WAS FILED FOR RECORD IN PLAT BOOK 11 AT PAGE 3239 ON THIS DAY OF September 20, 2009.

Mary M. Johnson
CLERK OF THE COURTS
SANTA ROSA COUNTY, FLORIDA



WEIGHT AND DELINEATION PAGE 2 LINE TABLE

| NUMBER | DIRECTION | DISTANCE |
|--------|---------------|----------|
| W1 | S-88°52'42"-E | 15.19 |
| W2 | S-88°52'42"-E | 15.19 |
| W3 | S-88°52'42"-E | 15.19 |
| W4 | S-88°52'42"-E | 15.19 |
| W5 | S-88°52'42"-E | 15.19 |
| W6 | S-88°52'42"-E | 15.19 |
| W7 | S-88°52'42"-E | 15.19 |
| W8 | S-88°52'42"-E | 15.19 |
| W9 | S-88°52'42"-E | 15.19 |
| W10 | S-88°52'42"-E | 15.19 |
| W11 | S-88°52'42"-E | 15.19 |
| W12 | S-88°52'42"-E | 15.19 |
| W13 | S-88°52'42"-E | 15.19 |
| W14 | S-88°52'42"-E | 15.19 |
| W15 | S-88°52'42"-E | 15.19 |
| W16 | S-88°52'42"-E | 15.19 |
| W17 | S-88°52'42"-E | 15.19 |
| W18 | S-88°52'42"-E | 15.19 |
| W19 | S-88°52'42"-E | 15.19 |
| W20 | S-88°52'42"-E | 15.19 |
| W21 | S-88°52'42"-E | 15.19 |
| W22 | S-88°52'42"-E | 15.19 |
| W23 | S-88°52'42"-E | 15.19 |
| W24 | S-88°52'42"-E | 15.19 |
| W25 | S-88°52'42"-E | 15.19 |
| W26 | S-88°52'42"-E | 15.19 |
| W27 | S-88°52'42"-E | 15.19 |
| W28 | S-88°52'42"-E | 15.19 |
| W29 | S-88°52'42"-E | 15.19 |
| W30 | S-88°52'42"-E | 15.19 |

LINE TABLE

| NUMBER | DIRECTION | DISTANCE |
|--------|---------------|--------------|
| L1 | N-88°17'35"-E | 925.15 (REC) |
| L2 | N-88°17'35"-E | 925.15 (REC) |
| L3 | N-88°17'35"-E | 925.15 (REC) |
| L4 | N-88°17'35"-E | 925.15 (REC) |
| L5 | N-88°17'35"-E | 925.15 (REC) |
| L6 | N-88°17'35"-E | 925.15 (REC) |
| L7 | N-88°17'35"-E | 925.15 (REC) |
| L8 | N-88°17'35"-E | 925.15 (REC) |
| L9 | N-88°17'35"-E | 925.15 (REC) |
| L10 | N-88°17'35"-E | 925.15 (REC) |
| L11 | N-88°17'35"-E | 925.15 (REC) |
| L12 | N-88°17'35"-E | 925.15 (REC) |
| L13 | N-88°17'35"-E | 925.15 (REC) |
| L14 | N-88°17'35"-E | 925.15 (REC) |
| L15 | N-88°17'35"-E | 925.15 (REC) |
| L16 | N-88°17'35"-E | 925.15 (REC) |
| L17 | N-88°17'35"-E | 925.15 (REC) |
| L18 | N-88°17'35"-E | 925.15 (REC) |
| L19 | N-88°17'35"-E | 925.15 (REC) |
| L20 | N-88°17'35"-E | 925.15 (REC) |
| L21 | N-88°17'35"-E | 925.15 (REC) |
| L22 | N-88°17'35"-E | 925.15 (REC) |

CURVE TABLE

| NUMBER | RADIUS | BEARING | CHORD | DEGREES | CHORD | LENGTH | ARC | LENGTH |
|--------|--------|-----------|---------------|---------|-------|--------|-----|--------|
| C1 | 315.44 | 02°40'50" | N-52°40'03"-E | 14.62 | 14.62 | 14.62 | | |
| C2 | 25.00 | 83°10'02" | S-1°22'57"-W | 33.19 | 33.19 | 33.19 | | |
| C3 | 25.00 | 83°10'02" | S-1°22'57"-W | 33.19 | 33.19 | 33.19 | | |
| C4 | 25.00 | 83°10'02" | S-1°22'57"-W | 33.19 | 33.19 | 33.19 | | |
| C5 | 25.00 | 83°10'02" | S-1°22'57"-W | 33.19 | 33.19 | 33.19 | | |
| C6 | 25.00 | 83°10'02" | S-1°22'57"-W | 33.19 | 33.19 | 33.19 | | |
| C7 | 25.00 | 83°10'02" | S-1°22'57"-W | 33.19 | 33.19 | 33.19 | | |
| C8 | 25.00 | 83°10'02" | S-1°22'57"-W | 33.19 | 33.19 | 33.19 | | |
| C9 | 25.00 | 83°10'02" | S-1°22'57"-W | 33.19 | 33.19 | 33.19 | | |
| C10 | 25.00 | 83°10'02" | S-1°22'57"-W | 33.19 | 33.19 | 33.19 | | |
| C11 | 25.00 | 83°10'02" | S-1°22'57"-W | 33.19 | 33.19 | 33.19 | | |
| C12 | 25.00 | 83°10'02" | S-1°22'57"-W | 33.19 | 33.19 | 33.19 | | |
| C13 | 25.00 | 83°10'02" | S-1°22'57"-W | 33.19 | 33.19 | 33.19 | | |
| C14 | 25.00 | 83°10'02" | S-1°22'57"-W | 33.19 | 33.19 | 33.19 | | |
| C15 | 25.00 | 83°10'02" | S-1°22'57"-W | 33.19 | 33.19 | 33.19 | | |
| C16 | 25.00 | 83°10'02" | S-1°22'57"-W | 33.19 | 33.19 | 33.19 | | |
| C17 | 25.00 | 83°10'02" | S-1°22'57"-W | 33.19 | 33.19 | 33.19 | | |
| C18 | 25.00 | 83°10'02" | S-1°22'57"-W | 33.19 | 33.19 | 33.19 | | |
| C19 | 25.00 | 83°10'02" | S-1°22'57"-W | 33.19 | 33.19 | 33.19 | | |
| C20 | 25.00 | 83°10'02" | S-1°22'57"-W | 33.19 | 33.19 | 33.19 | | |
| C21 | 25.00 | 83°10'02" | S-1°22'57"-W | 33.19 | 33.19 | 33.19 | | |
| C22 | 25.00 | 83°10'02" | S-1°22'57"-W | 33.19 | 33.19 | 33.19 | | |
| C23 | 25.00 | 83°10'02" | S-1°22'57"-W | 33.19 | 33.19 | 33.19 | | |

ACKNOWLEDGMENT (OWNER):

STATE OF FLORIDA
COUNTY OF SANTA ROSA
THIS IS TO CERTIFY THAT ON THE 22nd DAY OF September 2009 BEFORE ME, THE INDIVIDUAL, DENY BOUTER, WHO IS PERSONALLY AS IDENTIFICATION AND WHO IS DESCRIBED IN THE FOREGOING INSTRUMENT OF DEDICATION AND ACKNOWLEDGMENT TO AND BEFORE ME, THAT SAID INSTRUMENT IS HIS FREE ACT AND DEED, THIS DAY OF September 20, 2009.

Deny Boutier
PRINTED NAME
HEATHER L. HOKE
PRINTED NAME
NOTARY PUBLIC STATE OF FLORIDA
MY COMMISSION EXPIRES: 12/31/2010

APPROVAL-BOARD OF COUNTY COMMISSIONERS

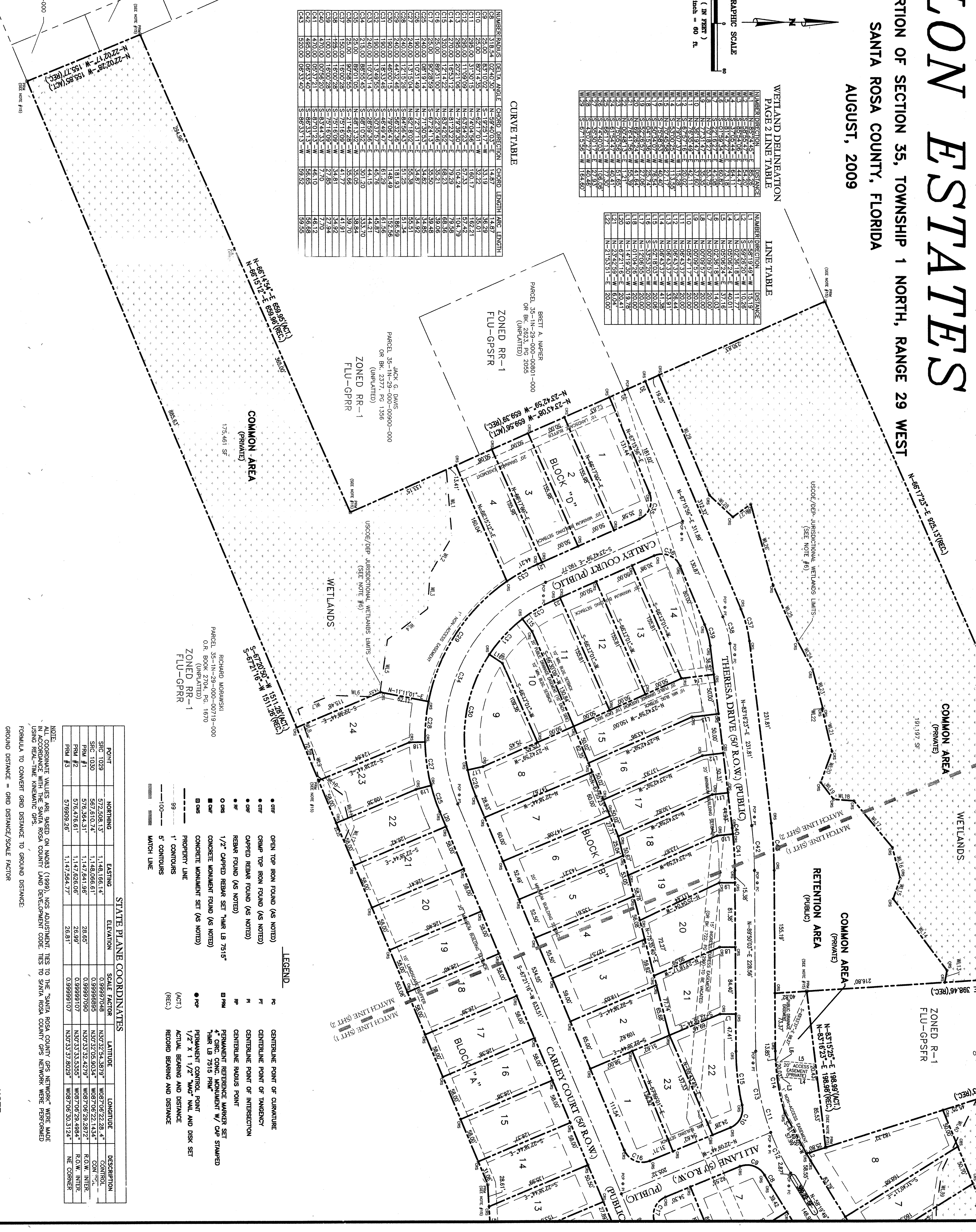
I, MARY M. JOHNSON, CLERK OF THE COURTS OF SANTA ROSA COUNTY, FLORIDA, HEREBY CERTIFY THAT THIS PLAT WAS PRESENTED TO THE BOARD OF COUNTY COMMISSIONERS OF SAID COUNTY AT THEIR MEETING ON THE 27 DAY OF August 2009. APPROVED FOR PLUNG BY SAID BOARD, AND I, AS CLERK OF THE CIRCUIT COURT OF SAID BOARD, WAS INSTRUCTED TO SO CERTIFY HERON.

Mary M. Johnson
CLERK OF THE COURTS
SANTA ROSA COUNTY, FLORIDA

CERTIFICATION OF APPROVAL

EXAMINED AND APPROVED BY:
ELIZABETH BATTERY
COUNTY ENGINEER
DATE: 9/23/09
PARCEL 35-N-29-000-00706-000
O.R. BK 1403, PG 1677
ZONED R-1
FLU-GPRR

RENEE C. BORGES
COUNTY ENGINEER
DATE: 9/24/09
PARCEL 35-N-29-000-00707-000
O.R. BK 1723, PG 315
ZONED R-1
FLU-GPSFR



LEGEND

- OPEN TOP IRON FOUND (AS NOTED)
- CHAMP TOP IRON FOUND (AS NOTED)
- CAPPED REBAR FOUND (AS NOTED)
- REBAR FOUND (AS NOTED)
- 1/2" CAPPED REBAR SET "HAR. LB 7515"
- CONCRETE MONUMENT SET (AS NOTED)
- PROPERTY LINE
- 1' CONTOURS
- 5' CONTOURS
- MATCH LINE

STATE PLANE COORDINATES

| POINT | NORTHING | EASTING | ELEVATION | SCALE FACTOR |
|----------|------------|--------------|-----------|--------------|
| SIC 1029 | 572,506.13 | 1,148,186.14 | 28.65 | 0.999997948 |
| SIC 1030 | 567,610.74 | 1,148,086.61 | 28.65 | 0.999998985 |
| PRM #1 | 576,384.31 | 1,147,641.98 | 28.65 | 0.99997990 |
| PRM #2 | 576,476.61 | 1,147,626.08 | 28.65 | 0.99999107 |
| PRM #3 | 576,999.26 | 1,147,584.77 | 28.65 | 0.99999107 |

NOTE: ALL COORDINATE VALUES ARE BASED ON NAD83 (1989). NOS ADJUSTMENT TIES TO THE "SANTA ROSA COUNTY GPS NETWORK" WERE MADE IN ACCORDANCE WITH THE SANTA ROSA COUNTY LAND DEVELOPMENT CODE. CODE TIES TO SANTA ROSA COUNTY GPS NETWORK WERE PERFORMED USING REAL-TIME KINEMATIC GPS. FORMULA TO CONVERT GRID DISTANCE TO GROUND DISTANCE: GROUND DISTANCE = GRID DISTANCE/SCALE FACTOR

NOTE: THIS PLAT IS NOT VALID WITHOUT PAGE 1 ATTACHED HERETO

| NO. | REVISION | DATE | ENGR. |
|-----|----------|------|-------|
| | | | |
| | | | |
| | | | |



HUTCHINSON, MOORE & RAUCH, LLC
ENGINEERS & SURVEYORS
LAND PLANNERS
2039 MAIN STREET
DAPHNE, ALABAMA 36526
TEL (251) 626-2626
FAX (251) 262-6934
dapne@hmrengineers.com

| SCALE | DATE | DRAWN BY | CHECKED BY | SHEET |
|--------|--------------|----------|------------|--------|
| 1"=60' | AUGUST, 2009 | E.E.G. | | 2 OF 2 |

FINAL PLAT 08-18
S1056\1992\1002

FINAL PLAT Avalon Estates
Superior Bank
Pg 39